

PURE WELD

PREMIUM SAFETY GEAR

OCTOBER 2019

ABOUT US

Our team here at PUREGAS believe only the best will do. Be it our industrial gases, cylinders, valves or the new range of PUREWELD Safety gear

This range of PUREWELD safety gear is made at the BUILDPRO® factory. BUILDPRO® and PUREWELD are sister companies and are owned by the same group

BUILDPRO® focuses on manufacturing premium work gear for Australian tradies, whereas, PUREWELD is the new safety manufacturing division

PUREWELD gear is made from top quality materials including genuine 350 gsm PROBAN®, premium quality leathers, Kevlar® thread, flame resistant materials and top quality hardware

All products are designed to Australian specifications

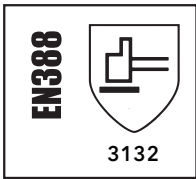
The PUREWELD range will be expanding so make sure to keep your eye out for new products

TERMS

- \$600 Nett FIS- Capital Cities
- Remote areas may attract surcharge on freight
- Cannot be shipped with Gas orders
- Invoiced seperately to Gas orders

RIGGERS GLOVE

- Premium cowgrain Leather
- Elasticised cuff
- Excellent abrasion and puncture resistance
- Inner pack 12 pairs
- Master carton 120 pairs



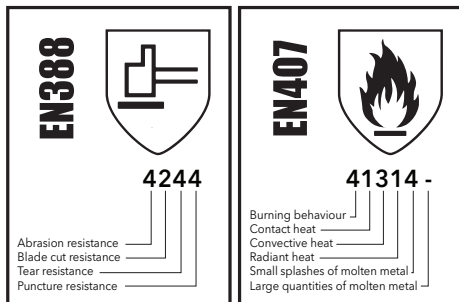
ITEM NUMBER	SIZE	BARCODE
GSRIG-S	Small	9333608049555
GSRIG-M	Medium	9333608049562
GSRIG-L	Large	9333608049579
GSRIG-XL	XL	9333608049586
GSRIG-XXL	XXL	9333608049593

RIG MAX



WELDING GLOVES

- Manufactured from premium cowhide leather
- Cotton fabric lining
- Sewn together with Kevlar® thread
- Reinforced palm, thumb and knuckle guard with welted seams.
- 680mm long



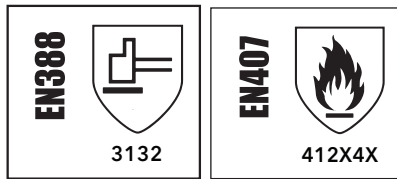
ITEM NUMBER	SIZE	BARCODE
GSMIG-XL	XL	9333608049524

SUPER MIG



TIG WELDING GLOVES

- Manufactured from premium leather
- Sewn together with Kevlar® thread
- Carefully crafted for maximum comfort with excellent dexterity.
- 680mm long



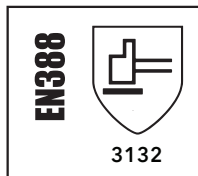
ITEM NUMBER	SIZE	BARCODE
GMTIG-XL	XL	9333608049548

TIG MAX



TIG WELDING GLOVES

- Manufactured from premium leather
- Sewn together with Kevlar® thread
- Carefully crafted for maximum comfort with excellent dexterity.



ITEM NUMBER	SIZE	BARCODE
GSTIG-XL	XL	9333608049531

SUPER TIG



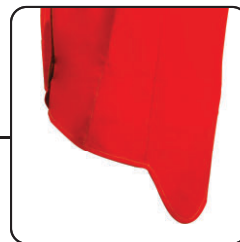
PREMIUM RED LEATHER WELDERS JACKET

- Premium cowhide leather
- Press Studs for front closure
- Pocket on sleeves for pens
- Adjustable cuffs
- Internal Pocket
- Side adjusters with press studs
- Wear areas reinforced with rivets
- 730 mm long
- Harness Compatible Flap on the back
- Stitched with Kevlar® thread
- Lined shoulders for comfort
- Made to Australian sizes



HARNESS
COMPATIBLE
FLAP

side view



EXTENDED BACK

for lower back
protection when bending
or kneeling

PREMIUM QUALITY
SUPER COMFORTABLE

ITEM NUMBER	SIZE	BARCODE
WJFL-M	Medium	9333608049708
WJFL-L	Large	9333608049715
WJFL-XL	XL	9333608049722
WJFL-2XL	2XL	9333608049739
WJFL-3XL	3XL	9333608049746

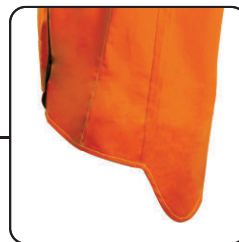
PROBAN® WELDERS JACKET

- Genuine Proban® material - 350 gsm
- Hook and Loop front closure
- Pocket on sleeves for pens
- Adjustable cuffs
- Stand-Up adjustable flap collar
- Double stitched with Kevlar® thread in stress areas
- Internal Pocket
- Harness Compatible Flap on the back
- Made to Australian sizes



HARNESS
COMPATIBLE
FLAP

side view



EXTENDED BACK

for lower back
protection when bending
or kneeling

GENUINE PROBAN®
WHEN ONLY THE BEST WILL DO!

ITEM NUMBER	SIZE	BARCODE
WJPF-M	Medium	9333608049753
WJPF-L	Large	9333608049760
WJPF-XL	XL	9333608049777
WJPF-2XL	2XL	9333608049784
WJPF-3XL	3XL	9333608049791

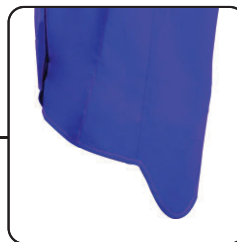
PROBAN® WELDERS JACKET WITH LEATHER SLEEVES

- Genuine Proban® material - 350 gsm
- Hook and Loop front closure
- Pocket on sleeves for pens
- Premium cowhide leather sleeves
- Adjustable cuffs
- Satin-Lined shoulders
- Stand-Up adjustable flap collar
- Rivets at stress points
- Double stitched with Kevlar® thread in stress areas
- Harness Compatible Flap on the back
- Made to Australian sizes



HARNESS COMPATIBLE FLAP

side view



EXTENDED BACK

for lower back protection when bending or kneeling

**PREMIUM QUALITY
SUPER COMFORTABLE**

GENUINE PROBAN®
WHEN ONLY THE BEST WILL DO!

ITEM NUMBER	SIZE	BARCODE
WJCP-M	Medium	9333608049807
WJCP-L	Large	9333608049814
WJCP-XL	XL	9333608049821
WJCP-2XL	2XL	9333608049838
WJCP-3XL	3XL	9333608049845

PROBAN® HIGH VISIBILITY WELDERS JACKET WITH LEATHER SLEEVES

- Genuine Proban® material - 350 gsm
- Hook and Loop front closure
- Pocket on sleeves for pens
- Premium cowhide leather sleeves
- Adjustable cuffs
- Satin- Lined shoulders
- Stand-Up adjustable flap collar
- Rivets at stress points
- 100% Flame resistant reflective tape
- Double stitched with Kevlar® thread in stress areas
- Harness Compatible Flap on the back
- With 'X' pattern reflective on the back (Also suits Rail Industry)
- Made to Australian sizes



HARNESS
COMPATIBLE
FLAP

WITH 'X' PATTERN REFLECTIVE ON THE BACK
(Also suits Rail Industry)

side view



EXTENDED BACK

for lower back
protection when bending
or kneeling

GENUINE PROBAN®
WHEN ONLY THE BEST WILL DO!

ITEM NUMBER	SIZE	BARCODE
WJHI-M	Medium	9333608049852
WJHI-L	Large	9333608049869
WJHI-XL	XL	9333608049876
WJHI-2XL	2XL	9333608049883
WJHI-3XL	3XL	9333608049890

PREMIUM LEATHER WELDING APRON

- Premium quality cow spilt leather
- Size: 900mm x 600mm
- Pockets for tools, rulers, markers etc.
- Stress points are riveted
- Stress areas are double stitched with Kevlar® thread

ITEM NUMBER	SIZE	BARCODE
WAPR	One size fits all	9333608049906



WELDING SPATS - BUCKLE TYPE CLOSURE

- Made to protect your boots from welding splatter
- Made from premium cow split leather
- Leather strap and buckle under boot
- Wear points reinforced with rivets
- Fully stitched with Kevlar® thread

ITEM NUMBER	SIZE	BARCODE
SPA-BU	One size fits all	9333608049913



WELDING SPATS - HOOK & LOOP CLOSURE

- Made to protect your boots from welding spatter
- Made from premium cow split leather
- Hook & Loop closure
- Wear points reinforced with rivets
- Fully stitched with Kevlar® thread

ITEM NUMBER	SIZE	BARCODE
SPA-VL	One size fits all	9333608049920



PROBAN® WELDERS HOOD

- Made from genuine PROBAN®
- Side gussets for a comfortable fit
- Hook & loop opening
- Stitched with Kevlar® thread
- Edges are fully bound



ITEM NUMBER	SIZE	BARCODE
HOOD-PR	One size fits all	9333608049937

PREMIUM LEATHER HOOD

- Made from premium cow split leather
- Side gussets for a comfortable fit
- Hook & loop opening
- Stitched with Kevlar® thread
- Edges are fully bound



ITEM NUMBER	SIZE	BARCODE
HOOD-FL	One size fits all	9333608049944

LEATHER WELDING SLEEVES

- Made from premium cow split leather
- Elasticised ends for easy fitting

ITEM NUMBER	SIZE	BARCODE
WSLL	One size fits all	9333608050070



WELDERS BLANKET

- Made from heavy duty cow split leather
- Stitched with Kevlar® thread to increase resistance to heat, cuts & abrasion
- Included Eyelets on outer edges for securing



ITEM NUMBER	SIZE	BARCODE
WB18	1.8 mtr x 1.8 mtr	9333608049678
WB20	2.0 mtr x 2.0 mtr	9333608049685
WB30	3.0 mtr x 3.0 mtr	9333608049692

CABLE COVERS

- Used to protect against hot metal burns, sparks, spatter and, hence, extending the life of torch cables
- Heavy Duty cowhide leather
- Easily cuts to required length
- Suit all types of cables and hoses
- Stitched with Kevlar® thread



Cable cover: Suits Torch Cable

ITEM NUMBER	SIZE	BARCODE
CAB-TC4	4mtr x 150mm	9333608049951
CAB-TC8	8mtr x 150mm	9333608049968

* used for MIG, TIG Plasma torch cables

Cable cover: Suits Wire feed Cables

ITEM NUMBER	SIZE	BARCODE
CAB-WF8	8mtr x 200mm	9333608049975
CAB-WF10	10mtr x 200mm	9333608049982

* used for MIG welder wire-feeder cables

BY



Tel: 1300733097

Fax: 1300 815 397

Email: sales@puregas.com.au